

SPEED SECTION CONTROL

LECTOR VISION

SMARTSENSOR LINE



Average speed



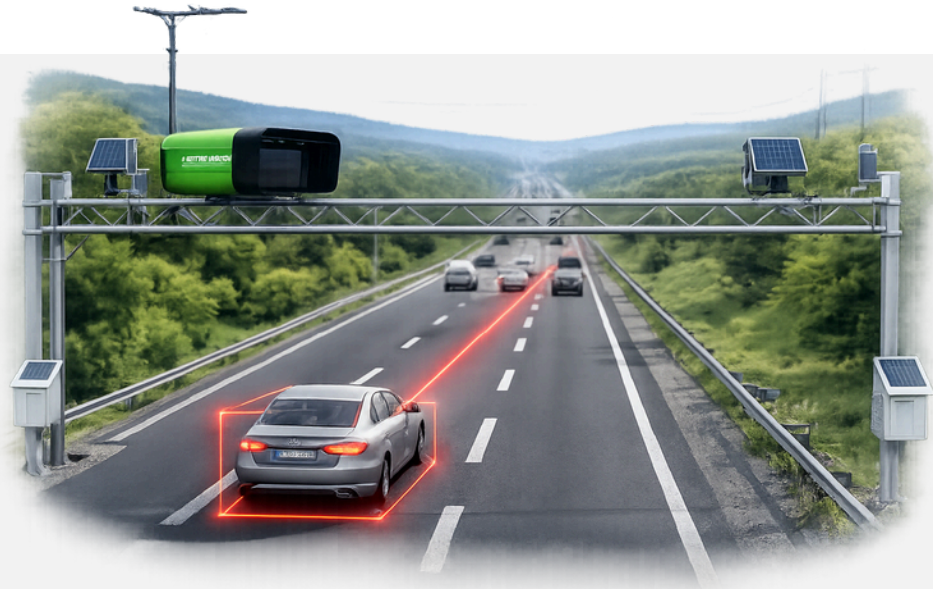
Sanction proposal



All in one



Non-intrusive



Road Safety

Section Control

Speed Section Control enforcement solution based on computer vision that identifies vehicles **at the start and end of a road segment** and calculates **average speed to generate**, when applicable, a sanction proposal. It is designed for continuous, automated operation with a compact architecture and simplified deployment.



Average speed enforcement using automatic number plate recognition at different check-points.



Multi-purpose in one solution: section control + statistical traffic analysis + 24/7 watchlist search.



Certified equipment (metrological certification and metrological approval).

SmartSensor

Technical details

LECTOR VISION



This product is part of the SmartSensor line.

Reliable design. Efficient implementation.

SmartSensor Speed Section Control.

The solution consists of two (or more) high-performance units and integrates IR and color cameras, IR lighting, control electronics, an industrial processor, communications, and the software necessary for speed calculation, license plate recognition, and the generation of infringement proposals. The solution is certified for installation in external servers or cloud instances.

ADVANTAGES

- Non-intrusive system designed to reduce deployment and operational costs.
- Lower power consumption, enabling solar panels and batteries as an option.
- High-speed detection capability.
- Automated operation without supervision, supporting multiple users/instances.
- Certified and approved for regulated enforcement environments.

Features

- B/W camera: CMOS, global shutter, 2560×1936 px, 1/1.8".
- Colour camera: CMOS, global shutter, 2560×1936 px, 1/1.8", IR-corrected.
- IR LED array, pulsed & synchronised, integrated power stage.
- Embedded processor with FPGA for high speed and accurate processing.
- Housing IP68 – IK10; operating temperature -40 °C to 60 °C.
- Power PoE ++, 18–75 VDC, 30 W.

Integrated multi-point

- **All integrated detection:** capture + IR + control + FPGA + communications + ANPR.
- **Certified software** according to compliance requirements.
- Requires a lighter communications **network**.
- **Point-to-point growth** without modifying control-centre hardware.
- **Offline** operating capability.
- **Fully automated workflow:** capture → calculation → sanction proposal.